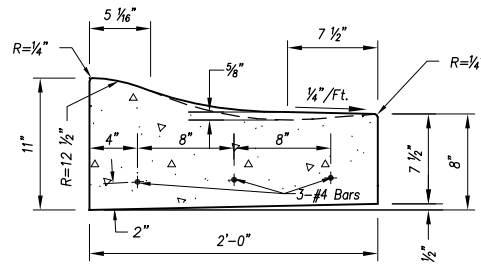


Standard Type "A" Curb



Type "A - Dry" Curb

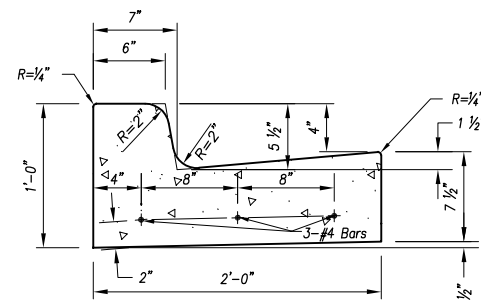
NOTE: in transitions, water shall flow from the gutter of Type "A" curb to the lip of Type "A-Dry" curb at 0.5% min. slope.

Curb & Gutter Notes:

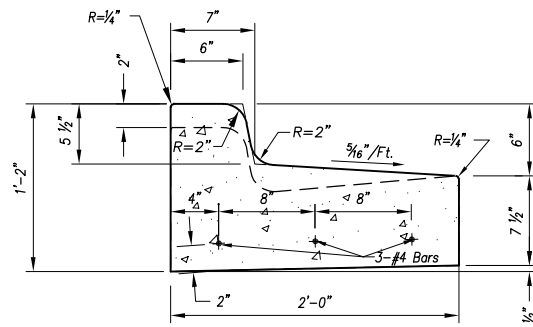
1. The Overland Park Municipal Code (OPMC) and Overland Park Design and Construction Standards Manual (OPDCSM) are incorporated, except as otherwise noted.
2. 1/2" preformed expansion joints shall be placed at points of curvature, curb returns, curb inlets, and at 250' centers. The expansion joints shall be sealed in accordance with OPDCSM. Contraction joints shall be 2" deep, and placed at 15' intervals equally spaced between expansion joints.
3. All concrete used in this work shall meet the requirements of the OPMC. KCMMB4K Concrete shall be used throughout.
4. For hand-formed curb all reinforcing steel shall be supported on fabricated steel bar supports @ 3'-0" maximum spacing, or as directed by the City Engineer.
5. See sidewalk ramp details for typical sidewalk ramp curb & gutter sections.

CONCRETE CURB & GUTTER

Not to Scale



Standard Type "B" Curb



Type "B - Dry" Curb

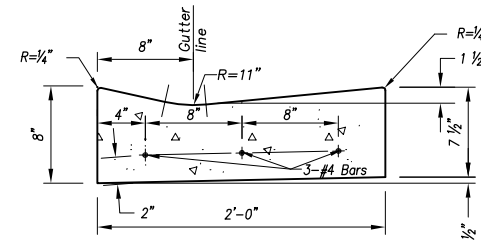
NOTE: in transitions, water shall flow from the gutter of Type "B" curb to the lip of Type "B-Dry" curb at 0.5% min. slope.

Curb & Gutter Notes:

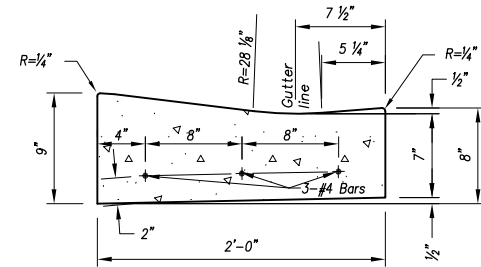
1. The Overland Park Municipal Code (OPMC) and Overland Park Design and Construction Standards Manual (OPDCSM) are incorporated, except as otherwise noted.
2. 1/2" preformed expansion joints shall be placed at points of curvature, curb returns, curb inlets, and at 250' centers. The expansion joints shall be sealed in accordance with OPDCSM. Contraction joints shall be 2" deep, and placed at 15' intervals equally spaced between expansion joints.
3. All concrete used in this work shall meet the requirements of the OPMC. KCMMB4K Concrete shall be used throughout.
4. For hand-formed curb all reinforcing steel shall be supported on fabricated steel bar supports @ 3'-0" maximum spacing, or as directed by the City Engineer.
5. See sidewalk ramp details for typical sidewalk ramp curb & gutter sections.

CONCRETE CURB & GUTTER

Not to Scale



Standard Type "C" Curb\*



Type "C-1" Curb \*

(Use w/ type "A" curb)

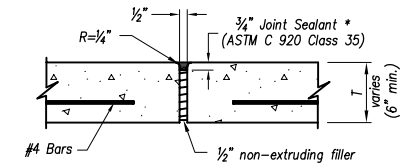
\* Use for commercial entrances

Curb & Gutter Notes:

1. The Overland Park Municipal Code (OPMC) and Overland Park Design and Construction Standards Manual (OPDCSM) are incorporated, except as otherwise noted.
2. 1/2" preformed expansion joints shall be placed at points of curvature, curb returns, curb inlets, and at 250' centers. The expansion joints shall be sealed in accordance with OPDCSM. Contraction joints shall be 2" deep, and placed at 15' intervals equally spaced between expansion joints.
3. All concrete used in this work shall meet the requirements of the OPMC. KCMMB4K Concrete shall be used throughout.
4. For hand-formed curb all reinforcing steel shall be supported on fabricated steel bar supports @ 3'-0" maximum spacing, or as directed by the City Engineer.
5. See sidewalk ramp details for typical sidewalk ramp curb & gutter sections.

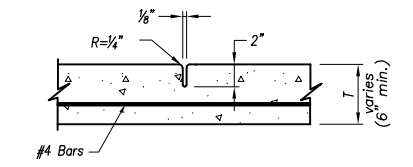
CONCRETE CURB & GUTTER

Not to Scale

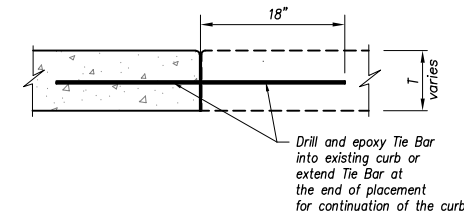


\* - Joint Sealant shall be installed within 48 Hours of curb placement

Expansion Joint



Contraction Joint



Construction Joint

JOINT DETAILS

Not to Scale

Year 2021 Edition

|                     |   |
|---------------------|---|
| REVISIONS:          |   |
| 07/01/03            | Concrete Mix Designation, Jan. 2008 Notes |
| Feb. 2008           | OPMC Reference                            |
| RELATED ORDINANCES: |   |
| OPMC Title 13       |   |



ABOVE AND BEYOND. BY DESIGN.

DEPARTMENT OF PUBLIC WORKS  
STANDARD DETAILS

CONCRETE CURB WITH ASPHALT PAVEMENT  
(COLLECTOR AND RESIDENTIAL STREETS)

DATE: 09/28/99

SHEET: 10