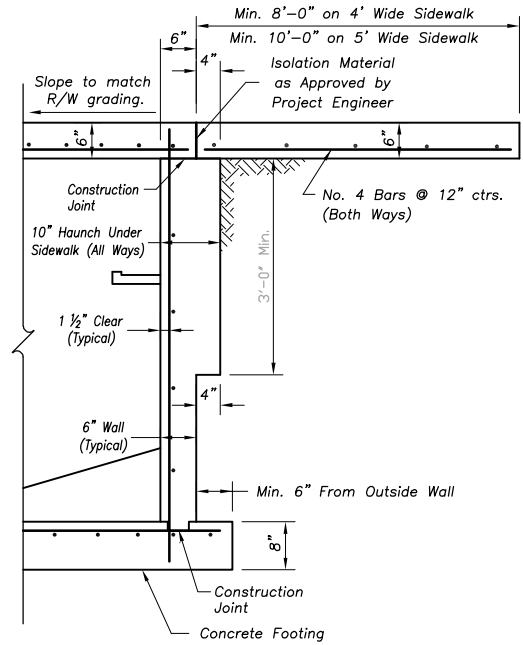
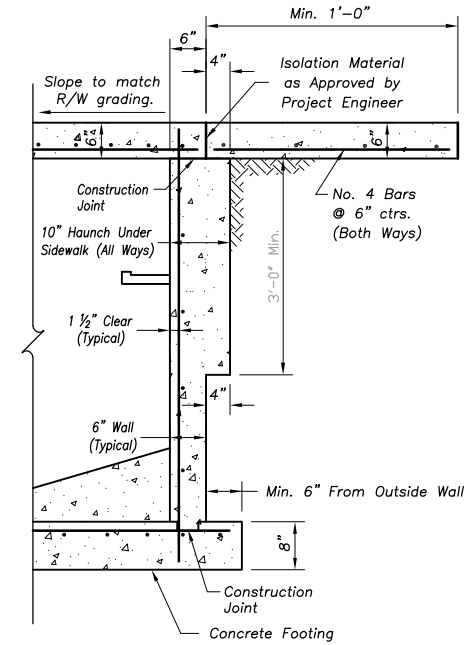


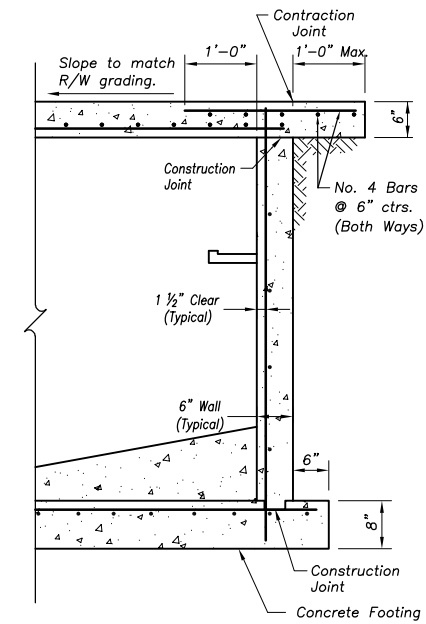
Plan
Not to Scale



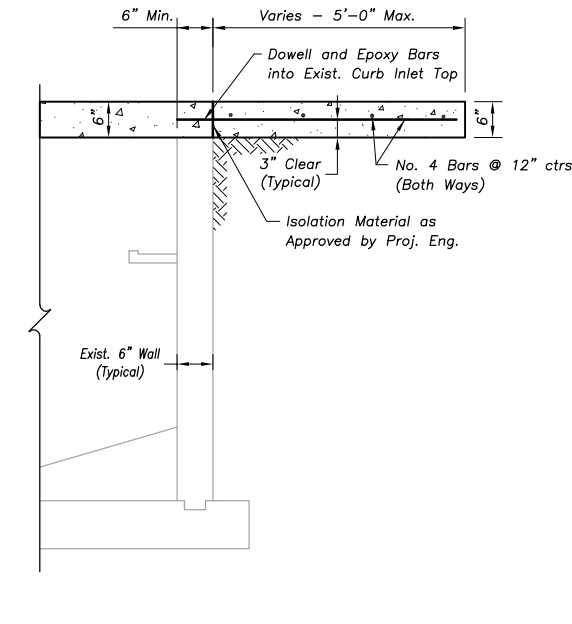
Section B-B
With Sidewalk Haunch



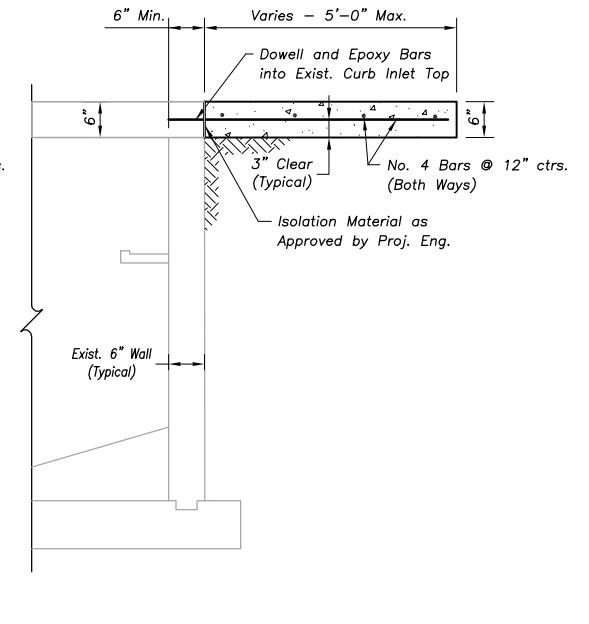
Section C-C
With Sidewalk Haunch Where Sidewalk
Width > 1' Along Back of Inlet



Section C-C
With Cantilever Inlet Top Where Sidewalk
Width < 1' Along Back of Inlet



Section C-C
With Type I and Type II Curb Inlet Repair
Typical all Sides



Section C-C
With Exist. Curb Inlet
Typical all Sides

Year 2022 Edition

REVISIONS:	
RELATED ORDINANCES:	
OPMC Title 15	

OVERLAND PARK
KANSAS
ABOVE AND BEYOND. BY DESIGN.

DEPARTMENT OF PUBLIC WORKS
STANDARD DETAILS

**CURB INLET
WITH ADJOINING SIDEWALK**