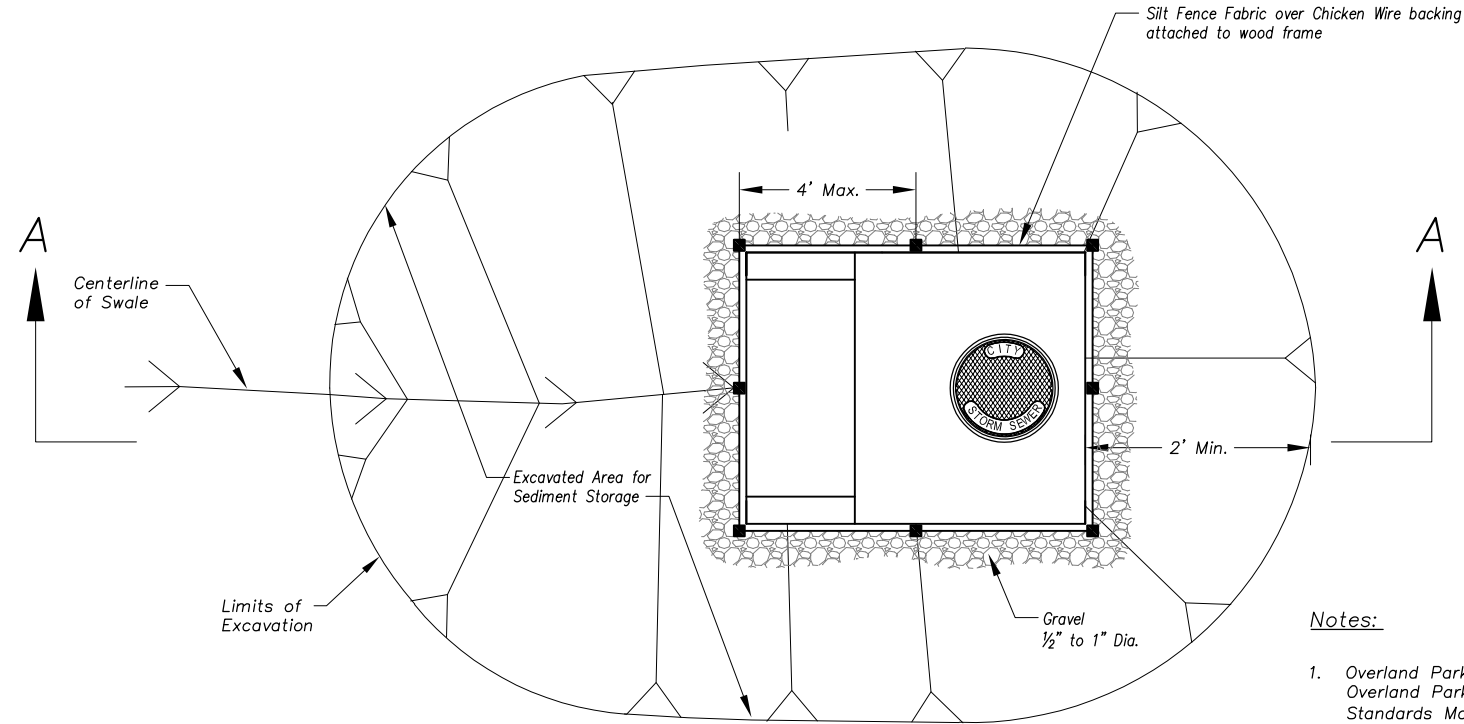
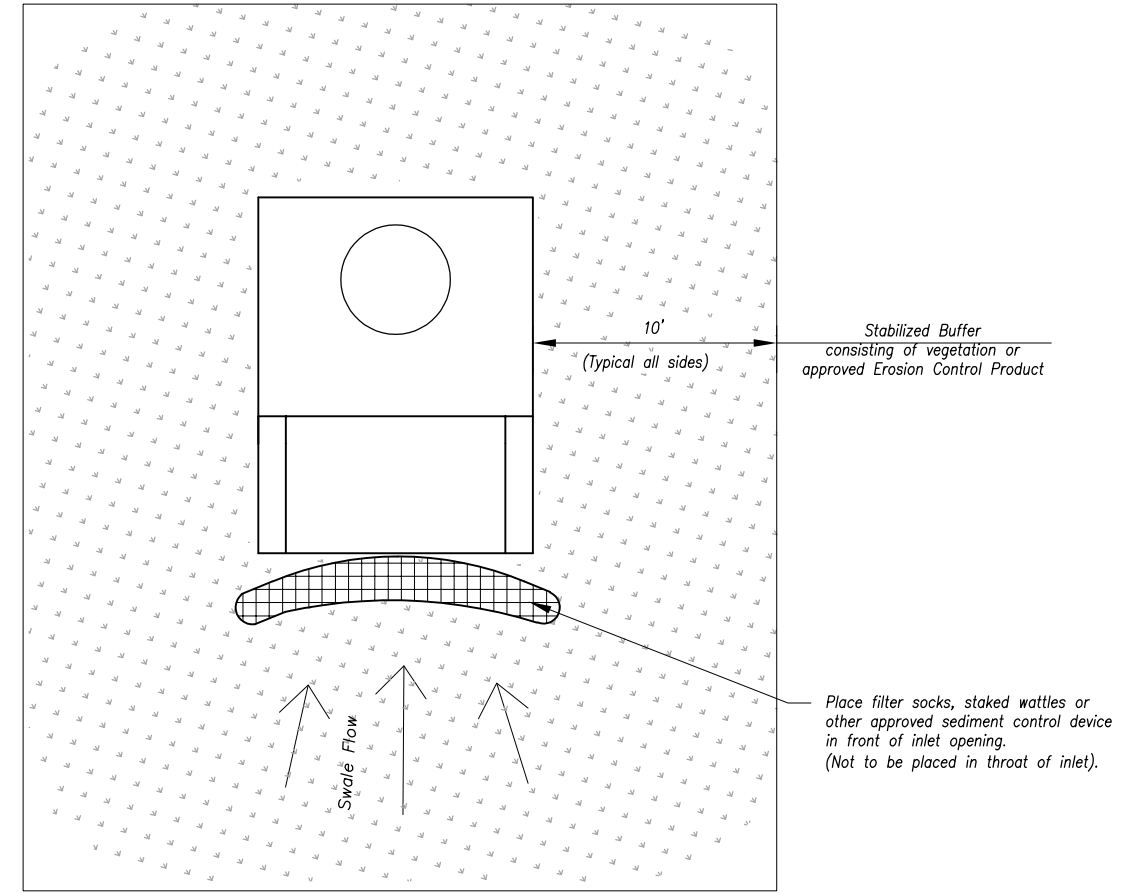


Section A-A
Not to Scale

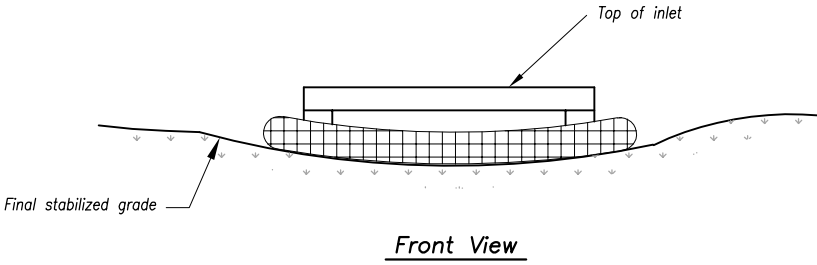


Plan
Not to Scale

CONDITION A
(All open boxes and inlets not at final grade)



Plan
Not to Scale



Front View

CONDITION B
(Area inlets at final grade and existing inlets)

Notes:

1. Overland Park Municipal Code (OPMC) and Overland Park Design and Construction Standards Manual (OPDCSM) are incorporated, except as otherwise noted.
2. Condition A Sediment Barrier to be installed immediately after inlet or junction box is constructed.
3. Silt fence shall remain in place until excavated area is removed and Condition B is being installed.
4. Backfill excavated area ONLY after final grading of the site. Stabilization of the site is to immediately follow.
5. Wire reinforced silt fence may be used in place of silt fence attached to wood frame.

Maintenance:

Remove deposited sediment from excavated storage areas when available storage has been reduced by 20%.
Remove deposited sediment from filter socks or similar when any accumulation of sediment is visible.
Repair or replace as necessary to maintain function and integrity of installation.

Year 2022 Edition

REVISIONS:	
Jan. 2009	Silt Fence Location;
Dec. 2011	Maintenance Statement;
RELATED ORDINANCES:	
OPMC Title 15	

OVERLAND PARK
KANSAS

ABOVE AND BEYOND. BY DESIGN.

DEPARTMENT OF PUBLIC WORKS
STANDARD DETAILS

TEMPORARY SEDIMENT BARRIER -
AREA INLET AND JUNCTION BOX