

OVERview

OVERLAND PARK
K A N S A S
ABOVE AND BEYOND. BY DESIGN.

FOR OVERLAND PARK RESIDENTS

WWW.OPKANSAS.ORG

FALL 2019

Just because it's on social media doesn't mean...

Nearly every hour of every day you see someone with their smartphone or mobile device scrolling through various social media sites for the latest information.

Maybe there's news about a family member or friend, an upcoming special event, the latest cooking tips, a funny video of a family pet or a post about possible unlawful activity.

Whether it's Nextdoor, Twitter, Facebook, Instagram or some other communications outlet, there's no guarantee Overland Park officials can see your posts. Visibility depends on the platform, geographic boundaries or homes associations, your own privacy settings, and other factors.



If you see suspicious activity or want to report a problem in your neighborhood, simply sharing the issue on social media may not help police or city officials see the information.

City officials can read and respond to your post if it is posted on or sent directly to an official city account. Still, there are challenges to Overland Park officials seeing or monitoring private messages.

Before posting something about suspicious behavior on your social media account, call the Overland Park Police Department's non-emergency number, 913-895-6300. Always call 911 in an emergency. Social media should not be considered an alternative to 911 during an emergency.

To report a resident request, use the city's customer service system OPCares. Do not use OPCares for an emergency.

If you see a post about suspicious criminal activity, ask the original writer to contact the police with any relevant information.

U.S. 69 improvements remain top of mind for local, state officials

"It's the transportation spine of Overland Park and region," Mayor Carl Gerlach said in a letter to federal U.S. Department of Transportation officials.

Mayor Gerlach is asking for support of the "Better Utilizing Investments to Leverage Development (BUILD)" transportation discretionary grant application to fund continued planning. This planning would further prepare for the ultimate construction of improvements to U.S. 69 Highway south of 119th St.

For years, Overland Park Governing Body members, business and community leaders, state officials and others have sought federal support to improve U.S. 69 from I-35 to 167th Street. "It is our number one transportation priority" said Tony Hofmann, director of Public Works.

This section of U.S. 69 is the busiest four-lane stretch of highway in Kansas.

"With your assistance, Overland Park will be able to improve safety, reduce congestion and improve travel time reliability along U.S. 69, a critically important regional commuter and freight corridor," Gerlach stated in his letter. "It (U.S. 69) serves more than 13 percent of the state's business community and 11 percent of the state's employment base, and it generates more than \$1 billion in tax revenue for the State of Kansas."

Inside This Issue...

KNOW YOUR MAYOR, COUNCILMEMBERS.....2
2020 BUDGET HOLDS LINE ON PROPERTY TAX RATE...3

BE COUNTED - 2020 CENSUS...3
BULKY ITEM PICKUP.....4

FESTIVAL, FARMSTEAD, FUN...5-13
RECYCLING EXTRAVAGANZA.....14

Continued on page 3



Mayor Carl Gerlach
10084 Hemlock, 66212
895-6104
Carl.Gerlach@opkansas.org

City Councilmembers

Ward One



Logan Heley
9826 W. 79th Place, #1102, 66204
895-6575
Logan.Heley@opkansas.org



Terry Happer Scheier
8340 Valley View Dr., 66212
341-9436
Terry.HapperScheier@opkansas.org

Ward Two



Paul Lyons
8828 Hadley, 66212
895-6574
Paul.Lyons@opkansas.org



Curt Skoog
9505 Linden, 66207
895-6108
Curt.Skoog@opkansas.org

Ward Three



Dave White
10123 Wedd Dr., 66212
492-5765
David.White@opkansas.org



Council President Jim Kite
10427 Caenen, 66215
438-2183
Jim.Kite@opkansas.org

Ward Four



Gina Burke
12861 King St., 66213
895-6570
Gina.Burke@opkansas.org



Fred Spears
12016 Westgate, 66213
895-6569
Fred.Spears@opkansas.org

Ward Five



Faris Farassati
12704 Woodson St., 66209
645-7929
Faris.Farassati@opkansas.org



John Thompson
5709 W. 128th Terr., 66209
895-6568
John.Thompson@opkansas.org

Ward Six



Chris Newlin
16836 Melrose St., 66221
895-6565
Chris.Newlin@opkansas.org



Rick Collins
15423 Woodward Ct., 66223
685-3148
Rick.Collins@opkansas.org



**W. Jack Sanders
Justice Center Police**
12400 Foster, 66213
895-6000
police@opkansas.org



City Hall
8500 Santa Fe Dr., 66212
895-6000
city@opkansas.org



Municipal Court
12400 Foster, 66213
327-6800
opmc@opkansas.org



Myron E. Scafe Building
Police, 8500 Antioch, 66212
895-6000
police@opkansas.org

2020 budget holds line on city property tax rate

Overland Park's proposed 2020 budget focuses on public safety and neighborhood stabilization operations, continues commitments to public infrastructure maintenance, maintains programs and services, and keeps a cautious eye toward the future.

"Overland Park's current stable financial position enables the city to meet demands, especially in the areas of public safety and neighborhood stabilization for the upcoming fiscal year," said Bill Ebel, City Manager. "There are significant public safety and infrastructure maintenance needs in the next two to five years," he further stated.

Ebel presented the budget, which proposes 17 new positions, including:

- ▶ Four new full-time police dispatchers and a dispatch supervisor.
- ▶ A full-time training officer and a full-time logistics officer in the fire department.
- ▶ Three new full-time information technology staff members, to support growing technology needs.
- ▶ Two new positions in the parks department, to allow additional focus on landscaping and parks maintenance.

Additional funding is also included for:

- ▶ School crossing guard services.
- ▶ A police SUV equipped to aid officers in community relations efforts and substance abuse prevention.

- ▶ The city's technology systems.
- ▶ Annual street maintenance.
- ▶ Traffic control system maintenance and more.

The proposed overall budget equals \$304.7 million, an increase of 3.4 percent from 2019. The 2020 operating budget, which funds day-to-day operations of the city from the general fund, is \$128.5 million.

The budget maintains Overland Park current mill levy, which at 13.566 is the lowest of any Johnson County city and first class city in Kansas. Your city mill rate accounts for about 12 percent of your total property taxes.

City leaders expect Overland Park will require additional public safety resources in the near future, and infrastructure maintenance will continue to be a priority as the city continues to age.

Visit www.opkansas.org/budget to see the full proposed 2020 budget.



Your participation helps OP, JoCo

The U.S. Census Bureau is preparing for the 2020 Census, which is happening early next year. We want you to know why it matters.

There are many ways the 2020 Census may shape our community. Whether it's a new school to ease overcrowded classrooms or a new road to ease congested commutes, it's key to adequately supporting the population. The results, collected once a decade, help determine how billions of dollars in federal funding are distributed to states and communities every year.

The Census Bureau expects to announce a new population by the end of 2020. The census is required by the U.S. Constitution, and the once-in-a-decade count began in 1790. Results of the census are used for allocation of federal funds for schools, roads and other public services for local communities.

Johnson County government and other local municipalities, including Overland Park,



Count Me In JoCo
Everyone counts for the 2020 Census

launched the "Count Me In JoCo" website as part of a year-long awareness campaign to educate residents about the importance of being counted and how to be counted. To learn more about Johnson County's role in the census, visit www.countmeinjo.co.org. For additional information about the census, visit www.census.gov.

U.S. 69 *continued from front cover*

Initial plans called for several phases to widen U.S. 69 from I-35 to 167th St. The first phase widened U.S. 69 from I-35 Highway to 103rd St.

Two other previously completed phases included the Antioch and I-435 interchange and ancillary lanes; and off and on ramps for College Boulevard and 119th St. in anticipation of widening U.S. 69 from 103rd to near 119th St., which is "shovel ready." However, this latest phase lacks federal and state transportation construction funds to proceed.

Over the past several months, local officials have conducted tours of U.S. 69 and met with federal lawmakers and national transportation officials to further explain the community's pressing need and further cooperation. That effort continues.

Bulky item pickup coming to half of city

If phone calls to city offices are any indication, the annual curbside bulky item pickup is popular and well received.

Overland Park's bulky item pickup service is scheduled for four weekends beginning Sept. 14 through Oct. 12, with a one-weekend break.

This year's collections, which will haul away items such as furniture, appliances and mattresses from single through four-plex households with curbside trash service, will be for homes east of Antioch. Last year's program served residents west of Antioch as part of an annual program that alternates east and west of Antioch each year.

Use the online interactive map at www.opkansas.org/bulky to find out if you are in this year's scheduled areas and your weekend. If you are part of this year's service, you'll also get a flier and postcard in the mail with more information.



There is a lot of ground to cover, so four dates will serve four separate areas east of Antioch over a five-weekend period, allowing the contractor more time to collect items over a large area of Overland Park.

Set out up to five bulky items, including appliances, rolled-up and secured rugs, grills without propane gas tanks, furniture, water heaters, refrigerators, and more at the curb for collection on your weekend.

Fencing, decking, lumber, and other construction materials, bagged or boxed items, yard waste, and hazardous waste will not be picked up and should not be left at the curb.

During your pick up weekend, you can drop off one pickup truck load of construction or demolition materials at the dropoff site. Johnson County accepts hazardous waste at dropoff sites. Visit jocogov.org/environment to schedule an appointment.

We can help you with flood insurance, information

The Federal Emergency Management Agency works with Overland Park to provide discounts on flood insurance premiums.

FEMA's National Flood Insurance Program continually faces paying flood loss claims while trying to retain affordable insurance costs. Nationally, the NFIP has paid nearly \$50 billion in flood insurance claims since 1978. In Overland Park, nearly seven percent of the total land area is in a flood zone. While much of that land area is in parks, streamway corridors and open space, there are an estimated 340 buildings within the city that are in a flood zone.



Overland Park participates in FEMA's Community Rating System, resulting in up to a 15 percent discount in flood insurance costs for Overland Park property owners. As part of this program, the city completes annual progress reports about mitigation efforts identified in a Repetitive Loss Area Analysis and the Regional Multi-Jurisdictional Hazard Mitigation Plan. Together these plans identify potential stormwater improvement projects and progress toward protecting properties from flood losses. All of these reports are available by contacting the Engineer of the Day at 913-895-6223 or eod@opkansas.org.

The city also maintains the following floodplain information for residents:

- Whether property is in the floodplain.
- Information about expected flood elevations, floodway limits, historical flood information, and steps property owners can take to protect themselves from future flooding if a property is determined to be in the floodplain.
- Elevation certificates on existing buildings.
- Localized drainage problem areas.
- Areas known as designated stream corridors that provide natural floodplain functions.

If you would like to find out more information about possible flooding issues in your neighborhood, floodplain assistance related to flood insurance or would like to schedule a site visit to review flood protection issues, please contact us at 913-895-6223.



Bluejacket, Marty, Stonegate and Young's pools close for the season after the close of business Sunday, Aug. 11.

After Aug. 11, Tomahawk Ridge Aquatic Center will be open Monday through Friday, 4-7 p.m. and Saturday and Sunday, noon-7 p.m., through Labor Day.

Overland Park Fall Festival

www.opkansas.org

Festival and Entertainment Schedule

- ▶ 7 a.m. to 1 p.m. - Farmers' Market
- ▶ 9 a.m. to 5 p.m. - Arts and Craft Fair
- ▶ 10 a.m. - Parade
- ▶ All Day - Ongoing music at three different stages
- ▶ All Day - Children's entertainment including inflatables, face painting, balloon artists
- ▶ All Day - Food trucks

Parking & Construction

- ▶ Public parking around Downtown Overland Park is available.
- ▶ Four shuttle buses will be running back and forth from near Thompson Park and Shawnee Mission West High School.

Saturday, Sept. 28

Downtown Overland Park

New location:
Downtown Overland Park,
7950 Marty St.
9 a.m. to 5 p.m.
(rain or shine)



Special thanks to presenting sponsors:
Friends of Overland Park Arts, City of Overland Park

Deanna Rose Children's Farmstead

Open
through
Oct. 31

Hours of Operation

- ▶ Open seven days a week: 9 a.m. to 5 p.m. through Oct. 31
- ▶ Until Labor Day: 9 a.m. to 8 p.m. on Tuesday and Thursday

Activity Hours

- ▶ Monday-Sunday: 9 a.m. to 5 p.m.
- ▶ Wagon Rides close at 3 p.m. Monday through Friday;
4 p.m. on Saturday and Sunday

Admission fees

- ▶ \$3 per person Friday-Sunday and holidays:
9 a.m. to 5 p.m. (under age 2 free)
- ▶ \$3 per person Monday-Thursday:
9 a.m. to 2 p.m. (under age 2 free)
- ▶ Free Admission Monday-Thursday: 2 p.m. to close



Programs

- ▶ **Guided Farm Tours** – \$7 per person, reservations required
- ▶ **History Tours** – \$7 per person, reservations required



Attractions

- ▶ Ray's Barber Shop
- ▶ John's Blacksmith Shop
- ▶ Helen's Country School House
- ▶ Kanza Indian Encampment
- ▶ Vic's General Store
- ▶ Ben's Bank
- ▶ Dairy Barn
- ▶ Farmhouse Concession Stand
- ▶ Alex and Emily's Ice Cream Parlor

Activities

- ▶ Pony rides - \$3
- ▶ Horse drawn wagon ride - \$3
- ▶ Bottle feed baby goats - \$1
- ▶ Fishing - \$3
- ▶ Mining - \$5
- ▶ Playgrounds
- ▶ Pedal tractors
- ▶ Birthday party packages

Volunteers needed

Apply at www.opkansas.org



Overland Park Farmers' Market

LAST DAY DECEMBER 7

7 9 5 0 M a r t y S t . • 9 1 3 - 8 9 5 - 6 3 9 0

"Best Farmers' Market in Kansas"



Payment Options

- ▶ Cash
- ▶ Credit & Debit Cards
- ▶ EBT/SNAP cards
- ▶ Kansas Senior Vouchers (SFMNP)

#OPFM • #DowntownOP

Golf Courses

Ask about our Patron Card

Save money every time you golf!

Only \$45 per year

(\$35 for seniors age 60+)

Purchase today and receive these benefits for the rest of 2019 and all of 2020.

Patron Card Benefits:

- ▶ 7-Day Advance Tee Times
- ▶ Green Fee Discounts (\$5-\$8 off prime times every day)
- ▶ \$1 Off Driving Range Balls
- ▶ 10 Percent Off All Pro Shop Merchandise
- ▶ \$10 Off USGA Handicap
- ▶ Personal Checks Accepted
- ▶ Use Of Westlinks Practice Area

golfop.com
913-890-1600



Host a GOLF GROUP OUTING and receive a discount on your HOLIDAY PARTY!

**The Highland's Room
at St. Andrews**
golfop.com/banquets

For questions and event pricing:
Call 913-890-1654
or email

standrewsbanquets@opkansas.org



Overland Park Arboretum & Botanical Gardens

8 9 0 9 W . 1 7 9 t h S t . • 9 1 3 - 6 8 5 - 3 6 0 4

Admission Fees:

\$3 per visitor 13-years old and older
\$1 for visitors 6-12 years old

Free for 5 years old and under, and
members of Friends of the Arboretum
Free each Tuesday

Hours of Operation:

Open seven days a week.

Oct.1-April 9: 8 a.m. to 5 p.m.

April 10-Sept 30: 8 am to 7:30 pm

Closed on Dec. 25

Guided-tours are available.

Call 913-685-3604 to schedule a tour.



Adventure Packs

Explore the trails using the Arboretum Adventure Packs. Choose from birding, orienteering or trees. Each pack includes activities and supplies, including binoculars for birding and compasses for finding our hidden treasures. Inquire in the Visitor Center or call ahead to reserve your pack, 913-685-3604. These are available at no extra cost.



Volunteer

Consider spending part of your leisure time volunteering at this lush 300-acre property. In addition to gardens, there are volunteer needs in many other areas. If you're interested call 913-685-3604 or email volunteercoordinator@opkansas.org.



Botanical Gardens & Hiking Trails

Thirteen different gardens offer an array of shrubs, ornamental grasses, flowers, trees and water features. Nearly four miles of paved and wood chip hiking trails wind through the forest and open out to the prairie. Trails range from easy to difficult.

Art

Art is a part of our everyday life. Enjoy viewing sculptures, collections and exhibitions.

Special Events & Programs

Wednesday and Thursday Free Children's Entertainment

Kids of all ages will have a great time enjoying live entertainment.

Sept. 4: Janie Next Door at Tomahawk Ridge Community Center

Sept. 5: Dino O'Dell at Matt Ross Community Center

Oct. 2: Stone Lion Puppet Theatre at Tomahawk Ridge Community Center

Oct. 3: Priscilla Tells Stories at Matt Ross Community Center

Dec. 4: Stone Lion Puppet Theatre at Tomahawk Ridge Community Center

Dec. 5: Percussion Magic at Matt Ross Community Center

Time: 10 a.m.

Fee: Free

Moon Shine on the Farm

Put on your jeans and boots, leave the kids at home and join us for a country party under the stars. There will be beer, wine, BBQ and entertaining country music. This fundraising event is all-inclusive: Dinner, drinks, dessert, live music, dancing, wagon rides, signature Moon Shine Mug and more.

When: Saturday, Sept. 7

Time: 7-11 p.m.

Where: Deanna Rose Children's Farmstead, 13800 Switzer

Fee: \$60 in advance; \$75 at the door

Tickets: Order online at drfarmstead.org

Night at the Arboretum

Each night we will feature a Native American Tribe that once lived here in eastern Kansas. Enjoy the night-time sights and sounds and escape outdoors. Bring your flashlights and be ready to look up at the night sky.

When: Friday, Sept. 13, Oct. 4 and Nov. 8

Time: 7-9 p.m.

Where: Overland Park Arboretum & Botanical Gardens, 8909 W 179th St.

Fee: Included with admission

Terra Luna

An immersive light and sound experience created by Kansas City's own Quixotic. Join us for this one of a kind, new event.

When: Sept. 19, 20 and 21

Time: 7:30-10:30 p.m.

Where: Overland Park Arboretum & Botanical Gardens, 8909 W 179th St.

Fee: \$20 in Advance; \$25 at the door.

Discounts for members of Friends of the Arboretum

Tickets: Order online at opabg.org. Tickets are limited.

Family Yogatime in the Gardens

Yoga in the gardens as a family will spark little one's imagination and increase everyone's mindfulness.

When: Thursday, Sept. 19

Time: 10-11 a.m.

Where: Overland Park Arboretum & Botanical Gardens, 8909 W 179th St.

Fee: \$10 per member family;

\$15 per non member family

Tickets: opabg.org or 913-685-3604

Pumpkin Hollow

Hop aboard a horse-drawn hayride to Pumpkin Hollow, climb a hay pyramid, slide down the giant hay slide, take a ride on a barrel train pulled by a tractor, play lawn games, and choose the perfect pumpkin to take home.

When: Sept. 27 through Oct. 31

Time: Mon-Fri, 10 a.m. to 3 p.m.,

Sat-Sun, 10 a.m. to 4 p.m.

Where: Deanna Rose Children's Farmstead, 13800 Switzer

Fee: Regular Farmstead Admission, plus

\$8 per person to visit Pumpkin Hollow;

\$7 Friends of the Farmstead members





Night of the Living Farm

Experience the Farmstead after dark lit by lanterns if you dare. Enjoy traditional “spooktacular” fun such as scary and non-scary hayrides, activities, food and games.

When: Oct. 18, 19, 25 and 26

Time: 6-9 p.m.

Where: Deanna Rose Children's Farmstead, 13800 Switzer

Fee: \$10 per person; \$9 Friends of the Farmstead members



Botanical Brewfest

The best beer event in the metro.

When: Oct. 12

Time: 5-9 p.m.

Where: Overland Park Arboretum & Botanical Gardens, 8909 W 179th St.

Fee: GA \$60 per person, VIP \$85 per person, discounts for members

Tickets: opabg.org

Holiday Luminary Walk, an Annual Family Tradition

The Arboretum by candlelight.

When: Nov. 29 and 30; Dec. 6, 7, 13 and 14

Time: 5-9 p.m., last entry at 8 p.m.

Where: Overland Park Arboretum & Botanical Gardens, 8909 W 179th St.

Fee: \$12/person at opabg.org, 5 and under are free. Must be purchased online in advance

Holiday Lights on Farmstead Lane

Enjoy the light display showcasing music, pictures, animation and sparkling effects. Bring cocoa, cookies and blankets for viewing from the comfort of your car.

When: Nov. 28-Jan. 7

Time: 5-11 p.m.

Where: Deanna Rose Children's Farmstead, 13800 Switzer

Fee: Free

Toddle Time

This open-play time has an array of toys that will entertain your toddler.

When: Tuesday and Wednesday

Time: 9-11 a.m.

Where: Matt Ross Community Center, 8101 Marty

Fee: \$1 per child of members; \$2 per child of non-members. There is no admission fee for parents.



Art at the Center

An appreciation for art can be found at the art gallery. Exhibition feature all media of challenging and introspective art in photography.

Oct. 11-Nov. 24: The Landscapes Exhibit (local artists only)

Nov. 29-mid Jan 2020: Future of Art

Where: Tomahawk Ridge Community Center, 11902 Lowell

Fee: Free



R.E.C. Book Club

Meet new friends while discussing fiction books.

When: First Thursday of the month

Time: 7 p.m.

Where: Matt Ross Community Center, 8101 Marty



Sports Leagues

Fall and Winter leagues offer a variety of activities for both men and women of all levels.

Type: Volleyball, basketball, and Pickleball
Registration, prices and start dates vary depending on the league. For more information, visit opkansas.org/leagues or www.kccreowsouth.com.



RECREATION & PARK SERVICES

Recreational Facilities

Hours of Operation

5 a.m. to 10 p.m., daily

Did you know?

Overland Park has 83 parks and open spaces plus four small lakes and plenty of amenities, including

- ▶ Bike/hike trails
- ▶ Park shelters
- ▶ Tennis courts
- ▶ Sand volleyball courts
- ▶ Basketball courts
- ▶ Baseball/softball fields
- ▶ Soccer Fields
- ▶ Roller hockey
- ▶ Playground equipment
- ▶ Fishing

Shelter Reservations

Please call 913-895-6390



Event Spaces



Matt Ross Community Center

The spectacular room of more than 4,000 square feet is perfect to host any type of event for up to 200 people. For more information about reserving your room, visit www.opkansas.org or call 913-895-6390.



Hearth Room (Matt Ross)

A serene environment that's spacious and has a beautiful fireplace is the perfect location for up to 72 people. For more information about reserving your room, visit www.opkansas.org or call 913-895-6390.



Tomahawk Ridge Community Center

The furnishings, cool tones and a built-in dance floor make the room inviting to all of your guests of up to 200 people. For more information about room rentals, visit www.opkansas.org or call 913-895-6390.



Highlands Room (St. Andrew's Golf Course)

With our spacious room seating of up to 250 people and breathtaking views of the golf course, St. Andrews is the perfect space for events such as weddings, receptions, retirement parties and corporate retreats. For more information, visit www.golfop.org or call 913-897-3804 or email standrewsbanquets@opkansas.org



Lakeside Amphitheater (Overland Park Arboretum and Botanical Gardens)

Ponds, willow trees and seasonal flowers surround the Overland Park Arboretum & Botanical Gardens. The Lakeside Amphitheater can accommodate up to 125 people. For more information about rental space, please visit www.opkansas.org or call 913-685-3604.

Indoor Aquatics

Matt Ross Community Center

8101 Marty St. • 913-895-6390 • www.opkansas.org

Amenities

- ▶ Leisure pool with play features
- ▶ 3-story water slide
- ▶ Lap pool
- ▶ Hot water spa
- ▶ Wet & dry saunas

Birthday Parties

Enjoy an hour of party time and unlimited swim and gym time for up to 25 people. The base package starts at \$150. For more information or to book, visit www.opkansas.org or call 913-895-6390.



Indoor Group Lessons

Session 1: Sept. 15-Oct. 12

Monday evening lessons start Sept. 16
Tue.-Thu. lessons start Sept. 17
Saturday lessons start Sept. 21
Private lessons start Sept. 15

Session 2: Oct. 20-Nov. 21

Monday evening lessons start Oct. 28
Tue.-Thu. lessons start Oct. 24
Saturday lessons start Oct. 26
Private lessons start Oct. 20
* No lessons on Thursday Oct. 31

Swim Lesson Fees

	Indoor (MRCC)
Member	\$50/person
Non-Member	\$60/person

	Private	Semi-Private
Member	\$90/person	\$155/two individuals
Non-Member	\$100/person	\$175/two individuals



Special Swim for swimmers with a disability

Matt Ross Community Center Pool, 9-10 a.m.
First Sunday of each month.

Employment Opportunities

Integrity. Service. Pursuit of Excellence. Stewardship. Respect. Relationship Building. Do you possess these values? If so, apply to work for the city. The Recreation Services Department is looking for dedicated employees. All available positions are posted online. Apply today at www.opkansas.org.

Job openings include:

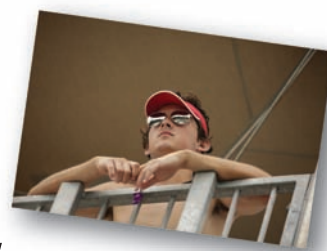
- ▶ Community center attendant
- ▶ Diving coach
- ▶ Farmers' market attendant
- ▶ Farmstead attendant
- ▶ Farmstead blacksmith
- ▶ Gardener
- ▶ Group exercise instructor
- ▶ Laborer
- ▶ Lifeguard
- ▶ Pool cashier
- ▶ Pool manager
- ▶ Swim coach



Aquatics Hiring 2020

High school and college students can apply today for a 2020 summer job. We offer competitive pay, fun in the sun and a chance to make new friends. We are looking for lifeguards, cashiers, pool managers, swim and dive coaches needed. Apply at www.opkansas.org

- ▶ Great pay, team atmosphere, fun environment, gain responsibility
- ▶ Lifeguards must be 15 years old or older by May 1.
- ▶ Lifeguard training is provided to the applicant at no cost.
- ▶ Cashiers must be 14 years old or older by May 1.
- ▶ Pool managers must have completed their sophomore year in college before to be eligible to apply.



RECREATIONAL ACTIVITIES

Matt Ross Community Center

8101 Marty St.
913-895-6350

Hours of Operation

Monday-Friday: 5:30 a.m.-10 p.m.
Saturday: 7 a.m.-8 p.m.
Sunday: 10 a.m.-8 p.m.

Amenities

- ▶ Fitness floor
- ▶ Fitness track
- ▶ 3-level playground
- ▶ Child watch
- ▶ Gymnasiums
- ▶ Indoor swimming pool
- ▶ Massage therapy
- ▶ Birthday party rooms
- ▶ Room rentals

Discounts Available

- ▶ Member Referral
- ▶ Veteran
- ▶ Disability
- ▶ HUD



MRCC - Resident Membership

(non-resident rates available online at opkansas.org)

TYPE	Adult	Youth	Senior	Senior Couple	Family
Total Fit Plan (paid in full)	\$550	NA	\$480	NA	\$955
Total Fit (12 scheduled payments)	\$49.83/month	NA	\$44/month	NA	\$83.58/month
Yearly (paid in full)	\$320	\$250	\$250	\$445	\$525
12 Schedule Payments	\$30.67/month	\$24.83/month	\$24.83/month	\$41.08/month	\$47.75/month
Three Months	\$115	\$90	\$90	NA	\$180

Daily Admission Fees

TYPE	Daily	Weekly
Individual Pass – MRCC	\$7	\$30
Family Pass – MRCC	NA	\$60

Tomahawk Ridge Community Center

11902 Lowell
913-327-6645

TRCC - Resident Memberships

(non-resident rates available online at opkansas.org)

TYPE	Adult	Youth	Senior	Senior Couple	Family
Total Fit Plan (paid in full)	\$405	NA	\$330	NA	\$755
Total Fit (12 scheduled payments)	\$37.75/month	NA	\$31.50/month	NA	\$66.92/month
Yearly (paid in full)	\$175	\$85	\$105	\$180	\$325
12 Schedule Payments	\$18.58/month	NA	NA	NA	\$31.08/month
Three Months	\$67	\$45	\$45	NA	\$110

Daily Admission Fees

TYPE	Daily	Weekly
Individual Pass – TRCC	\$5	NA
Family Pass – TRCC	NA	NA

Hours of Operation

Monday-Friday: 5:30 a.m.-10 p.m.
Saturday: 7 a.m.-8 p.m.
Sunday: 10 a.m.-8 p.m.

Amenities

- ▶ Fitness floor
- ▶ Child watch
- ▶ Ping Pong
- ▶ Gymnasiums
- ▶ Massage therapy
- ▶ Room rentals
- ▶ Art at the Center

Discounts Available

- ▶ Member Referral
- ▶ Veteran
- ▶ Disability
- ▶ HUD

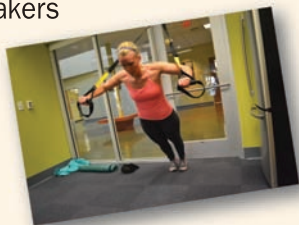


Group Exercise Classes

913-895-6350
www.opkansas.org

Cardio Classes

- ▶ Beach Body LIVE! Turbokick
- ▶ Bootcamp
- ▶ Cardio Dance and Dancing Sneakers
- ▶ Cycle
- ▶ Low impact aerobics
- ▶ Step Aerobics
- ▶ Zumba and Zumba Lite
- ▶ H.I.I.T
- ▶ Strong by Zumba
- ▶ Cardio Kickboxing.
- ▶ 20/20/20



Conditioning/Strength

- ▶ Barbell strength
- ▶ Body Shaper
- ▶ BOSU body
- ▶ Cardio Kickboxing (No gloves needed)
- ▶ Strengthen and Stretch
- ▶ Core & More
- ▶ Power 30



Mind/Body/Core

- ▶ Gentle yoga
- ▶ Pilates Mat
- ▶ Yoga and Chair Yoga
- ▶ Qi Gong
- ▶ Tai Chi
- ▶ Power Yoga



Group Exercise Membership

Length of Membership	Cost
1 month	\$40
3 months	\$100
6 months	\$160
1 year	\$280 (paid in full) \$328 (monthly auto pay)
Drop-in	\$5
Senior drop-in	\$4

Water Classes – Matt Ross Community Center

- ▶ Aqua Aerobics
- ▶ Aqua Extreme
- ▶ Joints In Motion

Did you know?

- ▶ Group exercise memberships may be sold separately from community center memberships.
- ▶ If you have a group exercise membership, you're able to work out at both community centers.
- ▶ All group exercise memberships allow for unlimited class usage for that membership.



Personal Fitness

913-895-6350

Personal Training:

- ▶ One-on-one training with a certified trainer that helps you reach your health goals.

- ▶ Free 20-minute consultation

*\$50 per one time session

*\$160 per one-hour sessions

*\$304 per eight one-hour sessions

*\$420 per 12 one-hour sessions

*\$120 per person four one-hour sessions (two-four people small group)

*\$224 per person eight one-hour sessions (two-four people small group)

*An additional \$8 per session will be added for non-members. Group exercise memberships do not apply.



TRX Training:

A workout that uses your own body weight and gravity designed to build strength, balance, flexibility, endurance, coordination and core stability all at the same time. A system of suspended straps will be used during the session.

Levels:

- ▶ TRX Basic
- ▶ TRX Strength
- ▶ TRX Golf
- ▶ TRX Cardio

Fee:

- ▶ Individual:
*\$50 per one time session or *\$160 per four one-hour sessions

- ▶ Small Group:
*\$120 per person, four one-hour sessions (two people small group)
*\$100 per person, four one-hour sessions (three people small group)
*\$80 per person, four one-hour sessions (four people small group)

*An additional \$8 per session will be added for non-members. Group exercise memberships do not apply.



Recycling Extravaganza: recycle, shred, donate and go

Do you have some items around your home that are taking up space, in the way or you're tired of cleaning around?

On Oct. 27, the Recycling Extravaganza returns and allows you to drop off and recycle many items not collected by routine curbside recycling, such as:

- ▶ **Electronics** - computers, TVs, printers, stereos, cables, keyboards, etc. Most items no charge. However, CRT TVs and monitors, console, and projection TVs - \$20-\$50.
- ▶ **Confidential documents** - onsite shredding to protect your identity. Donations accepted.
- ▶ **Mattresses and box springs** - \$10 per mattresses or box spring.
- ▶ **Medications** - for proper disposal. Clean out the cabinet and make a new start.
- ▶ **Bicycles** - working or not. Accessories accepted; no helmets.

Reusable items –

- ▶ **Clothing** - recycle your old clothes.
- ▶ **Building materials** - usable project leftovers or remodel removals.
- ▶ **Toys** - let them bring smiles to another child.
- ▶ **Furniture** - usable furnishings in good condition.
- ▶ **Eyeglasses** - prescription, readers or sunglasses.
- ▶ **Durable medical equipment** - used items can help others.

- ▶ **Pet supplies** - make tails wag with leashes, food, blankets and more.



- ▶ **Musical instruments** - new tunes (no pianos, organs or drums).
- ▶ **Shoes** - let someone else walk a mile in your lightly used footwear.

This event is extremely popular. Get there early to avoid any traffic backup or delay. The event will be from 8 a.m. to 2 p.m. on Saturday, Oct. 27, on the campus of Black & Veatch headquarters, 11401 Lamar. No residency requirement. Visit the city website at www.opkansas.org for more information.



Recycling recap

At the Recycling Extravaganza held April 27 at Johnson County Community College, you saved mountains of stuff from heading to our local landfill, including:

- ▶ 72,400 pounds of paper
- ▶ 300 bicycles
- ▶ 134,245 pounds of electronics
- ▶ 121 mattresses
- ▶ 404 pounds of unwanted medication

Recycle right

A volunteer group donned hardhats, safety vests and heavy duty gloves to sort through a truckload of items put out for curbside recycling here in Overland Park. While the results weren't great, the solution, on an individual level, is pretty simple: Recycle the right stuff the right way.

What lessons did we learn while sorting materials? The following **may be recycled** through your curbside service:

Cans and cartons - Food and beverage containers.

Paper - Magazines, newspapers and office paper.

Cardboard and paperboard - Flattened and without any food or oil stains. This includes pizza boxes.

Plastic bottles and containers - Rinsed. No foam cups or containers.

The following **cannot be recycled** at curbside:

Plastic bags - There are a lot of spinning parts required to efficiently sort recyclables. Plastic bags wrap around everything, causing other recyclables to be discarded while increasing sorting facility downtime and costs. Recycle plastic bags properly at retail locations, such as your grocery store.

Materials in plastic bags - Nearly 10 percent of all recyclables were wrapped inside plastic bags. Everything in a plastic bag ends up in the trash. Open top paper bags are OK but plastic bags are not.

Shredded paper or other tiny items - Shredded paper falls through the screening machinery and ends up in the trash. If you must shred at home discard it with your trash. The same can be said of loose bottle caps and other tiny items.

Glass - Glass collected at curbside frequently breaks and contaminates recyclable plastics and papers.

All glass containers and the materials it contaminates end up in the trash. Recycle glass at one of the many purple Ripple metal containers around town.

Non-recyclable plastics - Foam clamshells, Styrofoam, pipes, cutting boards, medication bottles, plastic sheet all end up in the trash. A symbol does not make it recyclable.

No scrap metal - The processing machinery is designed to recognize and sort cans. Scrap metal causes damage and ends up in the trash. Recycle scrap metals at the Overland Park drop off Recycling Center, 11921 Hardy, behind the fire station.

Be informed. Don't be a wishful recycler - Clothing, electronics, decorations and other items that you'd like to recycle and may be recyclable elsewhere all end up in the trash when collected with curbside recycling.



Tolerant plants, trees that enliven your landscape



With heat and less rainfall during the summer, many of us may lose perennials, shrubs and trees. Looking forward to 2020 here are few species of perennial plants and trees to consider that typically tolerate drier conditions.

Trees:

Hedge maple
Lacebark elm or Frontier elm
Thornless fruitless
honeylocustBald cypress
Sawtooth oak
Kentucky coffee tree
Bur oak
Goldenrain tree

Perennial Plants:

Black-eyed Susan
Indian blanket
Yarrow
Garden phlox
Lambs ear
Caryopteris
Daylily
Salvia

Although these plants can handle drier sites, it is important to provide supplemental water for at least the first few years of establishment.

FALL 2019

City of Overland Park
8500 Santa Fe Drive
Overland Park, KS 66212-2899
www.opkansas.org

PRSR STD
U.S. POSTAGE
PAID
KANSAS CITY, MO
PERMIT 2804

EARTH NOTES

- ▶ An estimated 40 million tons of plastic waste is expected to be generated in this country in 2019. More than 83 percent of that total is expected to end up in a landfill.
- ▶ A hot water faucet dripping one drop per second wastes 165 gallons a month. That's more than one person typically uses in two weeks. Faucet leaks are an inexpensive and easy fix.
- ▶ Refill a bottle and save a lot. Commercially bottled water costs thousands of times more than tap water with no demonstrated benefits.
- ▶ Change your outside lights to LED bulbs. You may never change the bulb again and the savings can be significant.

